

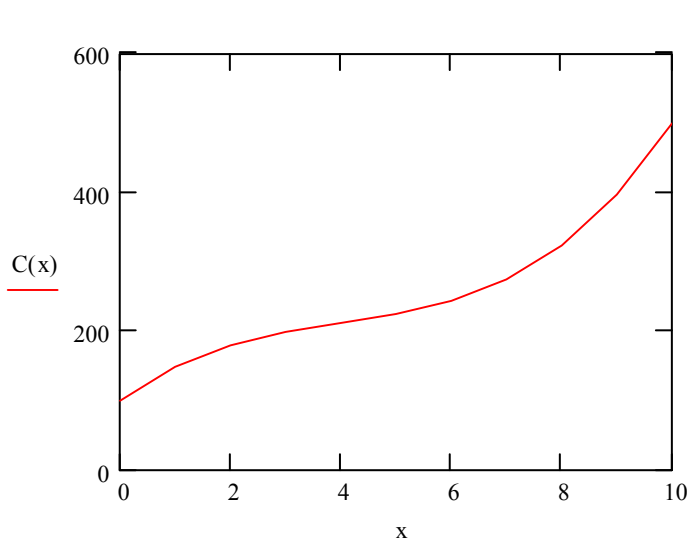
Degressive Costs and Progressive Costs Combined

$x := 0..10$ Quantity of goods produced

$C_V(x) := x^3 - 12x^2 + 60x$ Variable costs

$C_f := 100$ Fixed costs

$C(x) := C_f + C_V(x)$ Total costs



x =	C(x) =
0	100.00
1	149.00
2	180.00
3	199.00
4	212.00
5	225.00
6	244.00
7	275.00
8	324.00
9	397.00
10	500.00

$x := 1..10$

$c_V(x) := \frac{C_V(x)}{x}$ Variable cost per unit

$c_f(x) := \frac{C_f}{x}$ Fixed cost per unit

$c(x) := \frac{C(x)}{x}$ Total cost per unit

x =	$c_V(x) =$	$c_f(x) =$	$c(x) =$
1	49.00	100.00	149.00
2	40.00	50.00	90.00
3	33.00	33.33	66.33
4	28.00	25.00	53.00
5	25.00	20.00	45.00
6	24.00	16.67	40.67
7	25.00	14.29	39.29
8	28.00	12.50	40.50
9	33.00	11.11	44.11
10	40.00	10.00	50.00