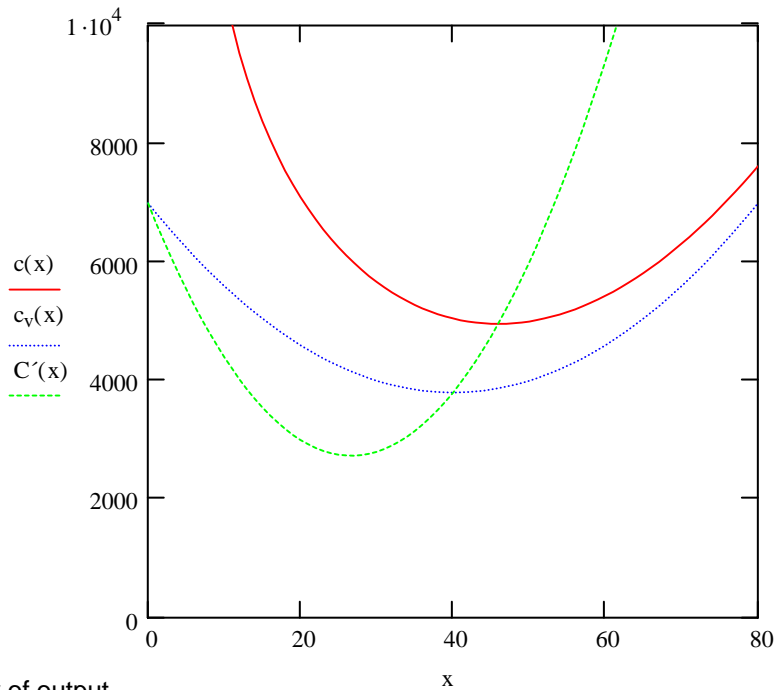
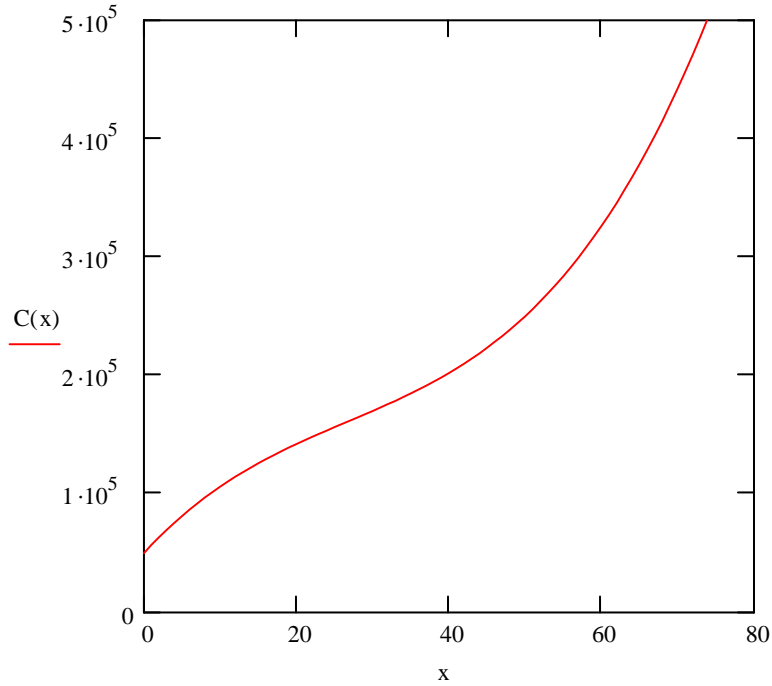


Cost Function According to the Law of Non-Proportional Returns

$x := 0..80$

$$C(x) := 50000 + 7000 \cdot x - 160 \cdot x^2 + 2 \cdot x^3 \quad c(x) := \frac{50000}{x} + 7000 - 160 \cdot x + 2 \cdot x^2$$

$$C'(x) := 7000 - 320 \cdot x + 6 \cdot x^2 \quad c_v(x) := 7000 - 160 \cdot x + 2 \cdot x^2$$



x = Quantity of output
 C = Total costs
 C' = Marginal costs
 c = Total costs per unit
 c_v = Variable costs per unit